

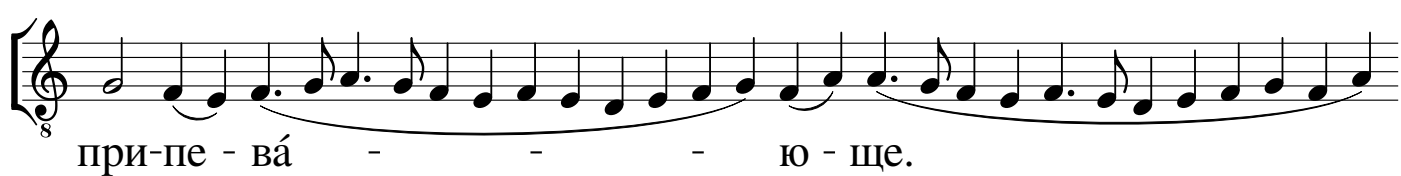
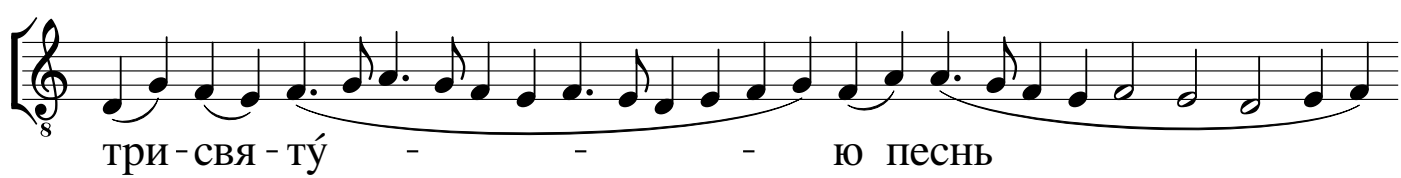
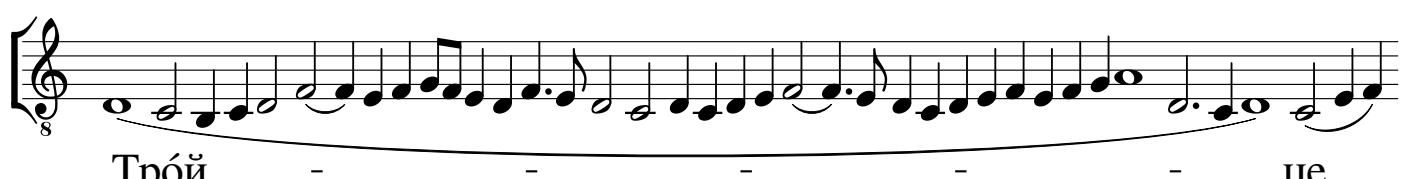
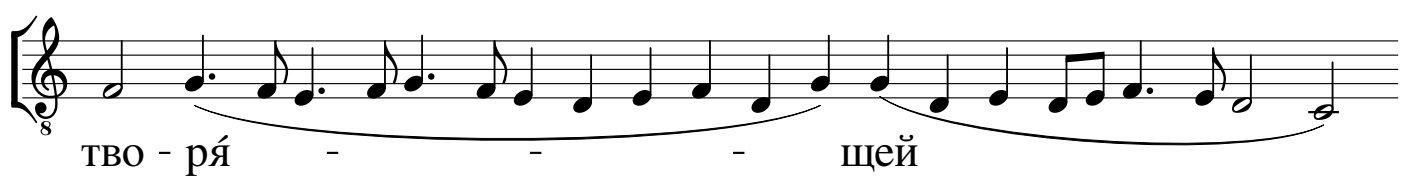
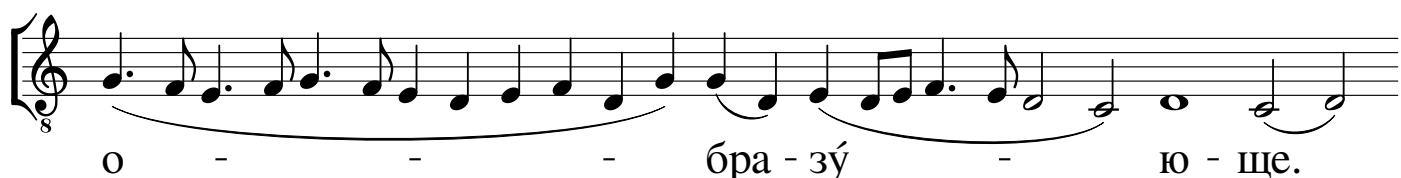
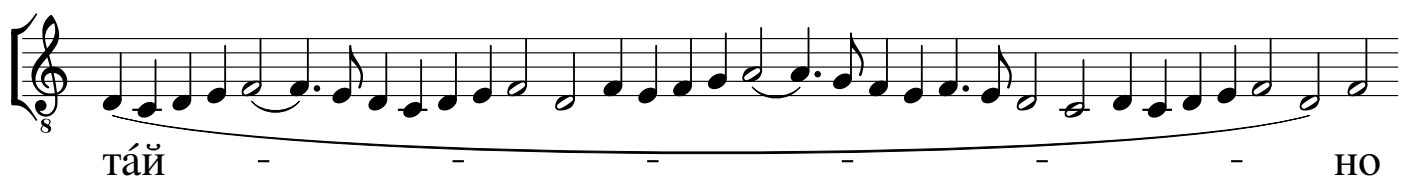
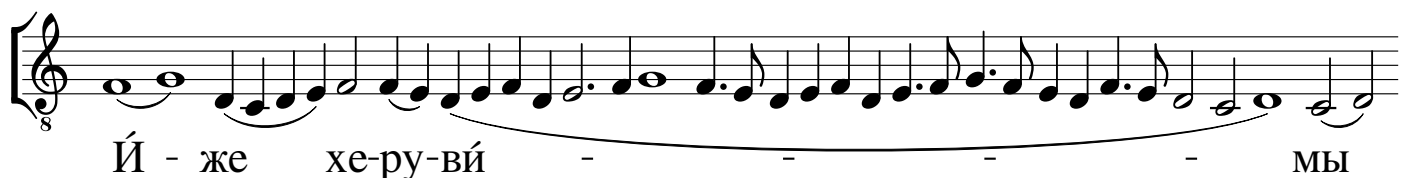
Иже херувимы

Строчная (№11)

Великий обиход Соловецкого монастыря

Рукоп. 1721-1723 гг. РНБ Сол. 622/673., л. 51 об. - 52 об.

Транслитация и транслитерация иеродиакона Афанасия (Савельева)



Вся - - - - -

ко - - - - - е ны - не

жи - тей - - - - - ско - е

от - - - - - ло - - - - - жим

по - пе - чё - ни - е.

Я - ко да ца - ря всех подь - и - мем,

ан - гель - ски - ми не - ви - ди - мо

до - ри - но - сй - - - - -

ма чин - ми.

Ал - ли - лу́ - и - я, ал - ли - лу́ - и - я,

This musical staff begins with a treble clef and a common time signature (C). The melody consists of a series of quarter notes on a single pitch, followed by a half note. The lyrics are written below the notes, with a slur under the final two notes.

ал - ли - лу́ - - - - -

This musical staff continues the melody with a treble clef and common time. It features a series of quarter notes, some with accents, and a long slur that spans across the entire staff, indicating a sustained note or a long breath.

И - я.

This musical staff concludes the phrase with a treble clef and common time. It features a series of quarter notes, some with accents, and a final note with a fermata. The lyrics are written below the notes.