

Иже херувимы

Смоленска (№15)

Великий обиход Соловецкого монастыря
Рукоп. 1721-1723 гг. РНБ Сол. 622/673., л. 82 об - 83
Транснотация и транслитерация иеродиакона Афанасия



И - же хе - ру - ви - - - - - мы,



и - же хе - ру - ви - - - - - мы,



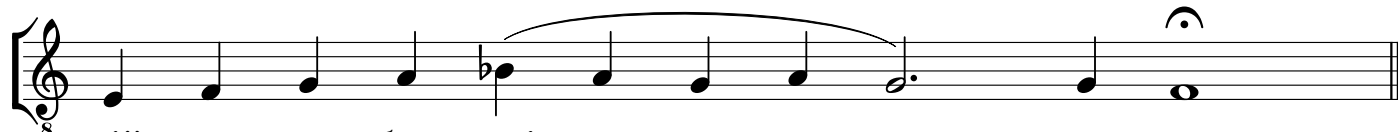
и - же хе - ру - ви - - - - - мы



тай - но о - бра - зю - - - - - ю - ще,



тай - но о - бра - зю - - - - - ю - ще,



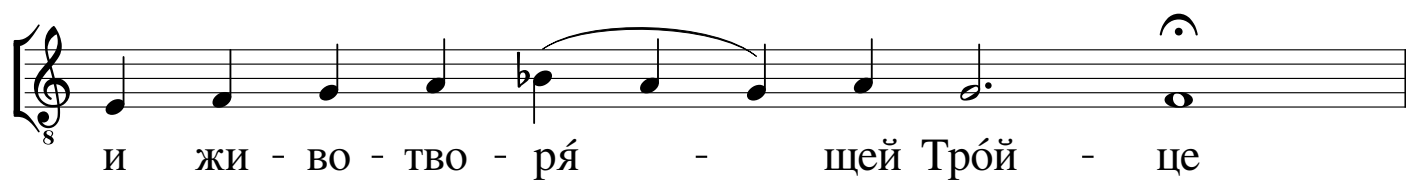
тай - но о - бра - зю - - - - - ю - ще.



И жи - во - тво - ря - - - - - щей Трой - це,



и жи - во - тво - ря - - - - - щей Трой - це,



и жи - во - тво - ря - шей Трой - це



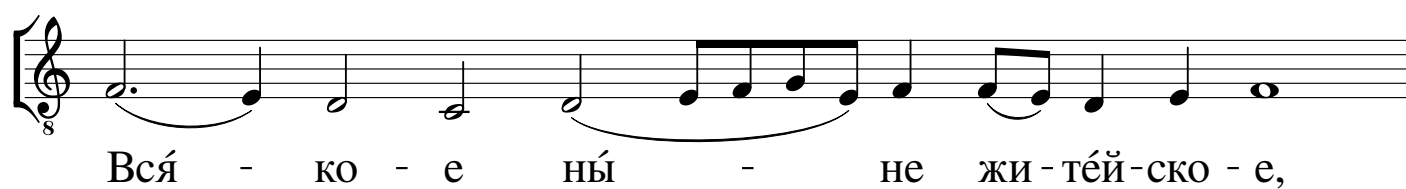
три - свя - ту - ю песнь при - пе - ва - ю - ще,



три-свя-ту - ю песнь припе-ва - ю - ще,



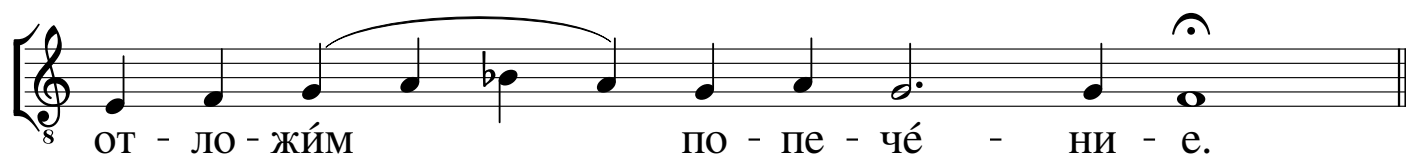
три - свя - ту - ю песнь при - пе - ва - ю - ще.



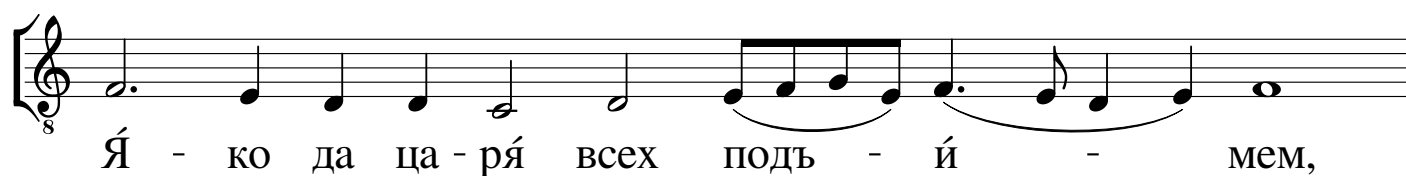
Вся - ко - е ны́ - не жи - тей - ско - е,



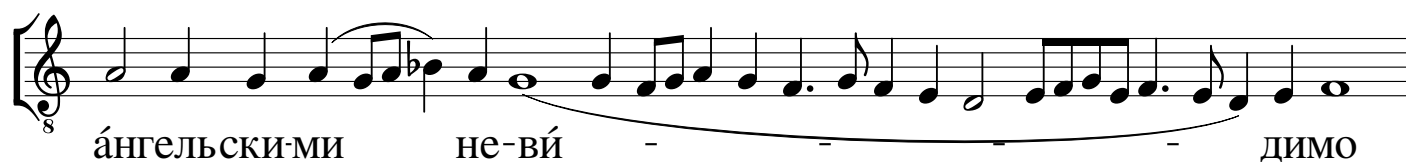
вся - ко - е ны́ - не жи - тей - ско - е



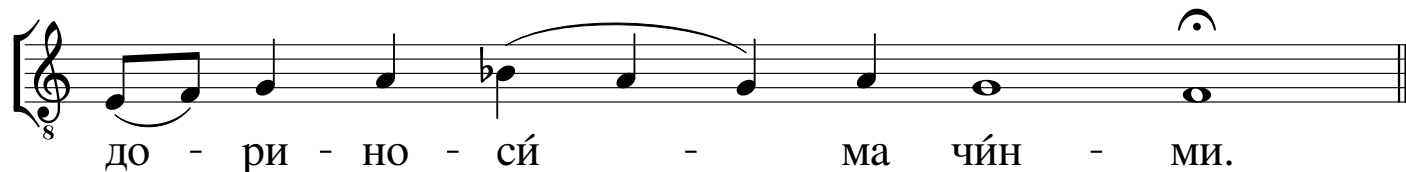
от - ло - жим по - пе - чё - ни - е.



Я - ко да ца - ря́ всех подь - и́ - мем,



а́нгельски-ми не-ви́ - димо




до - ри - но - сй - ма чин - ми.



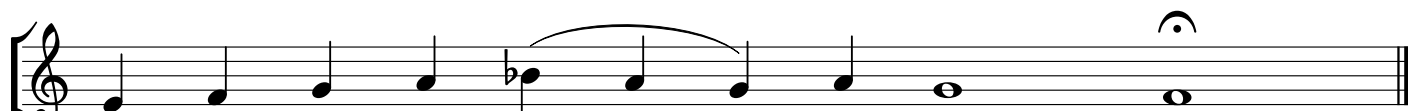
8 Ал - ли - лу́ - йа, ал - ли - лу́ - йа,

The first musical staff is in G-clef and 8/8 time. It contains the lyrics "Ал - ли - лу́ - йа, ал - ли - лу́ - йа," with notes and rests corresponding to the syllables. The first phrase "Ал - ли - лу́ - йа," consists of a dotted quarter note, a quarter note, a quarter note, a quarter note, a quarter note, a quarter note, a quarter note, and a half note. The second phrase "ал - ли - лу́ - йа," consists of a quarter note, a quarter note, a quarter note, a quarter note, a quarter note, a quarter note, a quarter note, and a half note. There are slurs over the "лу́" and "йа" syllables in both phrases.



8 ал-лилу́йа, али-лу́ - - - и - я,

The second musical staff is in G-clef and 8/8 time. It contains the lyrics "ал-лилу́йа, али-лу́ - - - и - я," with notes and rests corresponding to the syllables. The first phrase "ал-лилу́йа," consists of a quarter note, a quarter note, a quarter note, a quarter note, a quarter note, a quarter note, a quarter note, and a half note. The second phrase "али-лу́ - - - и - я," consists of a quarter note, a quarter note, a quarter note, a quarter note, a quarter note, a quarter note, a quarter note, and a half note. There are slurs over "лилу́йа" and "али-лу́".



8 ал - ли - лу́ - йа, ал - ли - лу́ - йа.

The third musical staff is in G-clef and 8/8 time. It contains the lyrics "ал - ли - лу́ - йа, ал - ли - лу́ - йа." with notes and rests corresponding to the syllables. The first phrase "ал - ли - лу́ - йа," consists of a quarter note, a quarter note, a quarter note, a quarter note, a quarter note, a quarter note, a quarter note, and a half note. The second phrase "ал - ли - лу́ - йа." consists of a quarter note, a quarter note, a quarter note, a quarter note, a quarter note, a quarter note, a quarter note, and a half note. There are slurs over "лилу́йа" and "лилу́йа".