

Исполнительный Орган
церкви Иоанна Предтечи
М. Предтеченский пер. дом 2
Телуц. счет № 7007 Кр. Пв. отд. Гесб

2
XX

1

20 ситт а ченуца
всегоде н - мунца

3

всегоде н - мунца

4

всегоде н - мунца

H/O

5

Handwritten musical notation for system 5. The system consists of two staves. The upper staff is a vocal line with a treble clef and a key signature of one flat (B-flat). The notes are: G4 (quarter), A4 (quarter), B4 (quarter), A4-G4 (beamed eighth notes), F4 (quarter), E4 (quarter), D4 (half). The lower staff is a piano accompaniment with a bass clef and a key signature of one flat. The notes are: F3 (quarter), G3 (quarter), A3 (quarter), B3 (quarter), A3-G3 (beamed eighth notes), F3 (quarter), E3 (quarter), D3 (half). The lyrics "w c e o d u" are written under the first four notes of the vocal line, and "w - m u - n i" are written under the last four notes.

6

Handwritten musical notation for system 6. The system consists of two staves. The upper staff is a vocal line with a treble clef and a key signature of one flat. The notes are: G4 (quarter), A4 (quarter), B4 (quarter), A4-G4 (beamed eighth notes), F4 (quarter), E4 (quarter), D4 (half). The lower staff is a piano accompaniment with a bass clef and a key signature of one flat. The notes are: F3 (quarter), G3 (quarter), A3 (quarter), B3 (quarter), A3-G3 (beamed eighth notes), F3 (quarter), E3 (quarter), D3 (half). The lyrics "w c e o d u" are written under the first four notes of the vocal line, and "w - m u - n i" are written under the last four notes.

Empty musical staff consisting of five horizontal lines.

Empty musical staff consisting of five horizontal lines.

Зем

Исполнительный Орган
церкви Иоанна Предтечи
М. Предтеченский пер. дом 2
Токуш. свет № 780 7 Кр. П. ота Гас

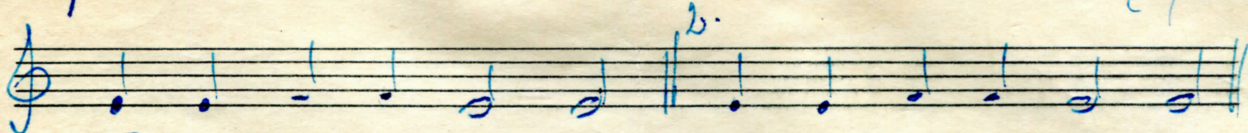
Мелодия Тоскана

29/11/1950

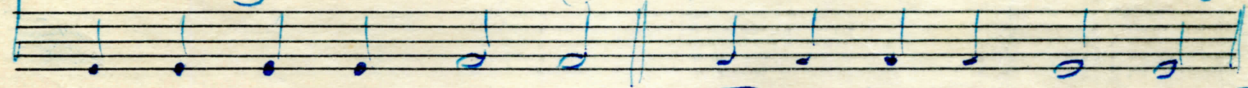
В. Дифена

Исполнительный Орган
церкви Иоанна Предтечи
М. Преподобный
дом
Толуцк. вчот № 708 7 XX
ОТД Г

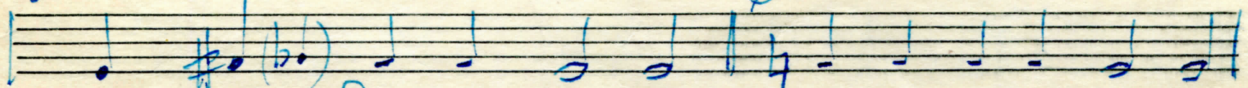
a / 1



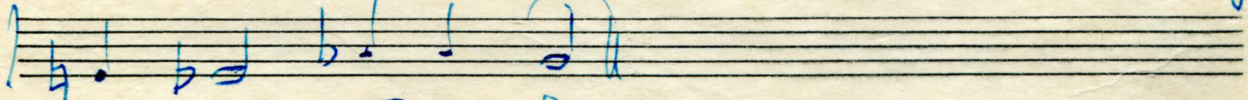
3 Госноди ко мени и восноди ко мени



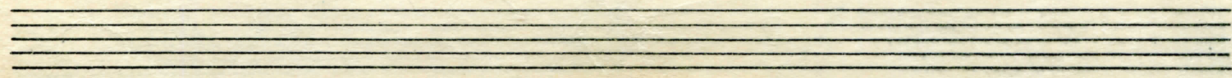
5. Госноди ко мени Госноди ко мени



Госно-ди ко мени. Госноди ко мени.



ме-бе Госноди.

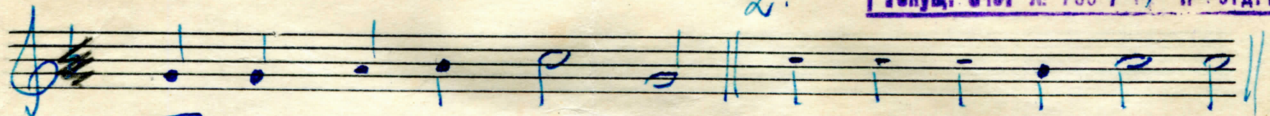


ш

В. Зубов

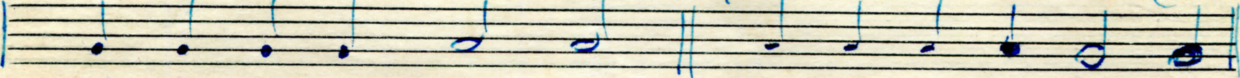
| |
|---------------------------------|
| Исполнитель: Орган |
| церкви Иоанна Предтечи |
| М. Предтеченский дом 2 |
| Телуш. счет № 7007 П. Этд. Госс |

1.

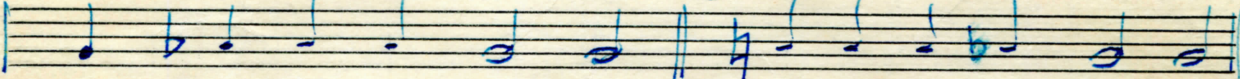


2.

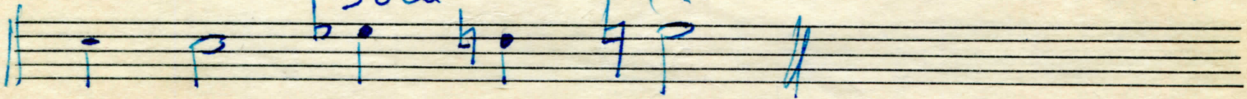
3. Господи н-ми еси 4. Господи н-ми еси



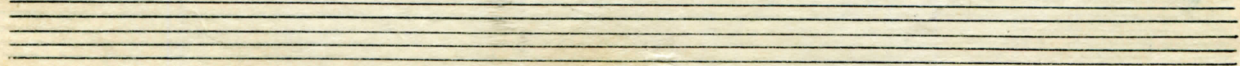
5. Господи н-ми еси 6. Господи н-ми еси



Госпо-ди н-ми еси. Господи н-ми еси.



те-бе Госпо-ди.



Исполните в О ган
 Церкви И адтечи
 М. Предз ом 2
 Телуш. стот П отд. Госб.

В. Эфремов

Х

1.

2. То сн - да хо - ма - му

3. 4. 5. 6.

То сн - да хо - ма - му

Также 4.5.6.

То сн - да хо ма му

Ваме

ме се То сн - да